

YEAR

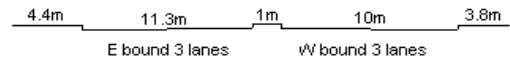
2013

LINK

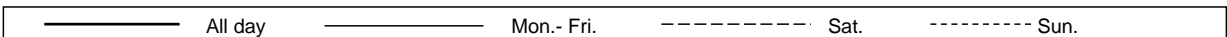
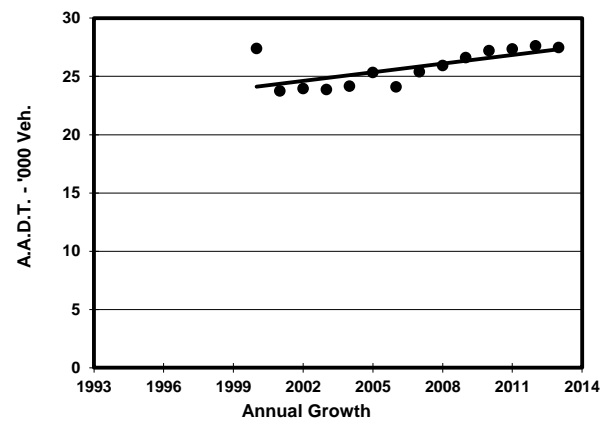
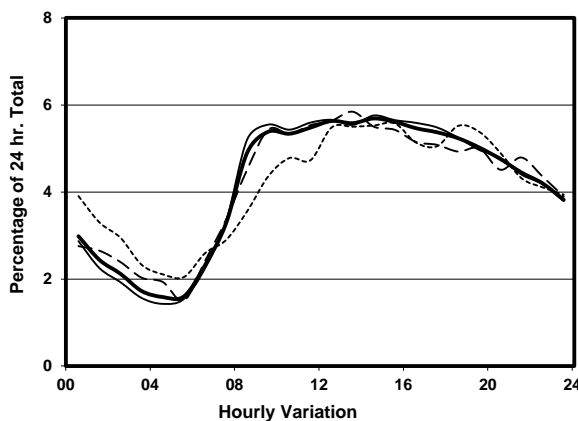
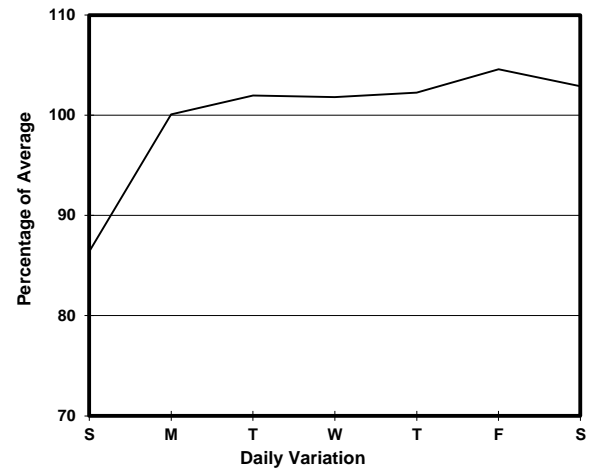
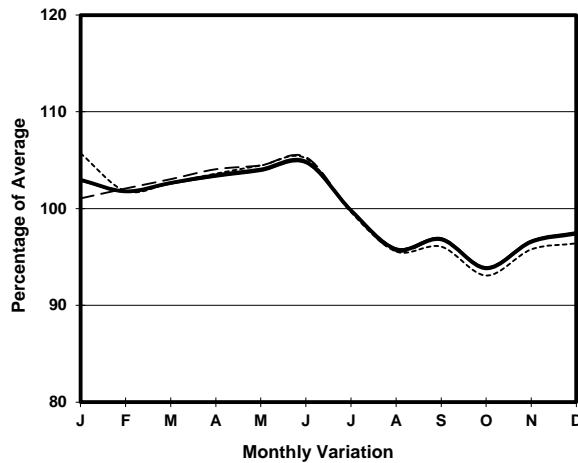
HENNESSY RD (from LUARD RD to FLEMING RD)

CORE STATION
ROAD NETWORK
ROAD TYPE

1029
MAJOR
PRIMARY DISTRIBUTOR



1. TRAFFIC FLOW VARIATION AND GROWTH



2. TRAFFIC CHARACTERISTICS (BY DIRECTION)

Parameter	All - Day	Mon. - Fri.	Sat.	Sun.
EAST BOUND				
A.A.D.T.	14840	15270	15620	12640
R 12 / 24 - %	61.8	63	60.4	56.9
R 16 / 24 - %	79.8	81	78.8	74.5
AM Peak Hour	0900-1000	0900-1000	0900-1000	0900-1000
One-way flow at AM peak hour	770	820	800	530
T - % (AM)	-	-	-	-
PM Peak Hour	1600-1700	1600-1700	1600-1700	1800-1900
One-way flow at PM peak hour	800	850	790	690
T - % (PM)	-	-	-	-
Prop.of commercial vehicles - 16 hr.	-	-	-	-
WEST BOUND				
A.A.D.T.	12630	12980	12850	11310
R 12 / 24 - %	64.3	65.4	63.4	59.5
R 16 / 24 - %	83.3	84.1	82.4	79.5
AM Peak Hour	0900-1000	0900-1000	0900-1000	0900-1000
One-way flow at AM peak hour	710	750	740	520
T - % (AM)	-	-	-	-
PM Peak Hour	1700-1800	1700-1800	1700-1800	1800-1900
One-way flow at PM peak hour	730	760	700	630
T - % (PM)	-	-	-	-
Prop.of commercial vehicles - 16 hr.	-	-	-	-

3. OTHER INFORMATION AND COMMENT